

open studios

7-8 MAY. 10am-4pm

Join the artists for dinner at the award winning Albion Hotel, Swifts Creek on Saturday 7th May at 7pm.

To book phone the Albion Hotel on 5159 1211



Penny Carruthers



9 Charlotte Spur Track, Tongio West (off Cassilis Rd) (1)

Penny studied Art at Swinburne with post graduate studies in drawing. As a freelance graphic artist she studied printmaking and photography part time, and most recently painting. Her passion is contemporary figurative and portrait painting and drawing.

The studio is situated in the Black Hill Organic Herb Gardens. Enjoy morning or afternoon tea among the different varieties of herbs and flowers for a small donation. A light vegan lunch is also available.

Phone 5159 4554

Rob Logie's Studio

139 Logies Road, Reedy Flat (off Hammonds Road) (6)

Call into the Old Pub Gallery for detailed directions.

Visit Rob's art and printmaking studio located in a beautiful bushland setting, a spectacular 20 minute drive from Ensay. Morning and afternoon tea available for a donation, light lunch available for \$8.

Phone 5157 3281



Allan Fox

925 Cassilis Rd, Tongio West (2)

Allan is currently working in minimal abstract hard edged work, depicting energy fields. After completing a Diploma of Painting at RMIT, Allan worked as an art teacher for 10 years and as a woodcraftsman for 30 years. He has exhibited extensively in regional galleries across Victoria.

Morning and afternoon tea available for \$5.

Phone 5159 4317.



Great Alpine Gallery

6881-6883 Great Alpine Road, Swifts Creek (3)

The Gallery features artwork and quality hand-made work from artists throughout the Great Alpine area. Join us for the opening of **Weede**, a contemporary exploration of weeds, on Friday 6th May at 6pm, to be opened by DELWP.

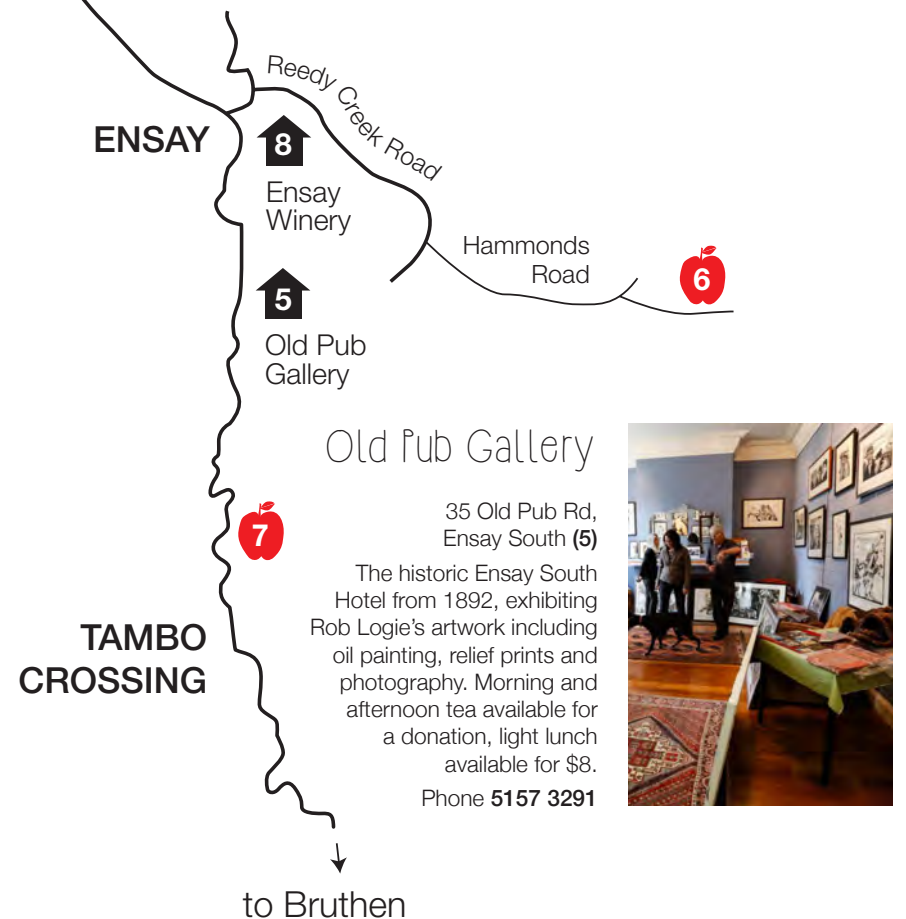


Carole Pepper

208 Swifts Creek East Rd, Doctors Flat (4)

Carole creates pure silk chiffon handmade eco printed wraps, sourced and crafted from seeds, plants and leaves indigenous to the Tambo Valley. Each piece is unique using an ancient and chemical free process leaving beautiful colours, impressions and marks on the cloth which vary with the seasonal changes. The same process is applied to create works on watercolour paper.

Phone 0429 148 033



10km

PROUDLY SUPPORTED BY



"All the artists welcomed us into their studios so warmly, it was great to see the different ways they worked, and their unique homes amongst the hills".

- MELINDA, 2015 (r)route tour

weekend workshops

28th-29th May

Join the artists for the
ART LOVERS' FEAST at the Ensay Winery
Winery - Saturday 28th May, from 6pm.

Eco Printing with Carole Pepper

Saturday 28th May
9am - 3pm

208 Swifts Creek East Road, Doctors Flat (4)
Cost: \$90 per person, includes all materials.
Learn the art of eco printing, creating rich imprints from natural materials on paper, and create your own eco-printed silk scarf.
Bring a collection of leaves you want to use (as big as a large bunch of flowers) and 2 pieces of cardboard for transporting wet prints home.
Morning tea provided, bring lunch to share.
Maximum 5 people.
For more information phone **0429 148 033**.



Wet Felting with Cath Rayment -
make your own boots or slippers

Saturday 28th May
9.30am - 4pm

Battle Point, 3730
Great Alpine Road,
Tambo Crossing (7)
Cost: \$75 plus \$10-\$15
for materials.
Tea and coffee provided,
bring lunch to share.
Maximum 6 people.
For more information
phone **0428 568 530**.



Monoprint Workshops with Rob Logie



Saturday 28th and
Sunday 29th May
9am-12noon, 1pm-4pm
139 Logies Road, Reedy Flat (6)
Call into the Old Pub Gallery for
detailed directions.
Cost: \$45 per session, \$160 for
4 sessions, includes materials.
Half, full or two day workshop at
Rob's art and printmaking studio
located in a beautiful bushland
setting, a scenic 20 minute drive
from Ensay. Studio equipped
with large press catering for a
wide variety of printmaking
techniques and experimentation.



Session 1: Introduction to water based monoprints
Session 2: Introduction to oil based monoprints
Session 3: Expanding on sessions 1 & 2
Session 4: Further exploration of techniques and
materials. All necessary materials supplied, bring your
own ideas, own materials also welcome. Further written
information on the workshops available if required.
Morning and afternoon tea available for a donation;
light lunch available, \$15 for a meal, \$5 for dessert.
Maximum 5 people per session.
For more information phone **5157 3281**.

ART LOVERS' FEAST at the Ensay Winery

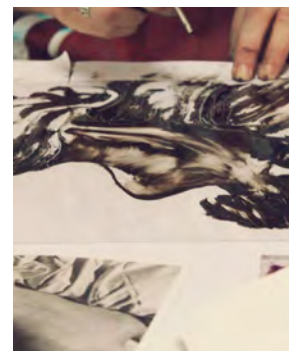


Saturday 28th May - 6pm.
5094 Great Alpine Road,
Ensay (8)
Cost: \$35 pp, wine can be
purchased at the winery.
Join the artists for an evening
of sumptuous local food and
wine among the wine barrels
in the rammed earth winery.
For more information phone
0418 221 078.

Silk Painting with Ann Bingham

Saturday 28th May
10.30am-3.30pm

Tambo Valley Bowling
Club, Cassilis Road (Swifts
Creek-Omeo Rd) Swifts
Creek (9)
Cost: \$80.
All dyes and equipment
supplied, one silk scarf
provided, extra silk can
be purchased on the day.
Lunch, tea and coffee
provided.
Maximum 6 people.
For more information
phone **0427 594 472**.



To book a
place in the
workshops visit:
[www.
creativegippsland.
com.au](http://www.creativegippsland.com.au)

Melon Basket Workshop with Lynn Lochrie

Sunday 29th May
10am to 4pm

Ensay Winery, 5094 Great
Alpine Road, Ensay (8)
Cost: \$50, includes all
materials.
Make a beautiful basket
in the shape of a melon
using cumbungi (bullrushes)
and grape vine. Bring a pair
of secateurs, an old towel
for wrapping damp materials
in, an apron to protect
clothes. Tea & coffee
provided. BYO lunch.
Free wine tasting and wine
sales available at cellar door.
Maximum 10 people.
For more information phone
0437 759 610.



Cyanotypes with Tracey Johnson



Sunday 29th May
9am to 3pm

Battle Point, 3730 Great Alpine
Road, Tambo Crossing (7)
Cost: \$60, includes materials.
Learn one of the oldest forms
of photography, creating brilliant
blue prints with sunlight.
Bring objects that create a good
shadow on paper, and lunch to
share. Tea and coffee provided.
Maximum 8 people.
For more information phone
0418 221 078.

Also open over this weekend -
May 28 -29:

Great Alpine Gallery
Old Pub Gallery
Penny Carruthers' Studio

Come and explore the breathtaking Tambo Valley -
visit artists in their handmade studios tucked away in fruit
filled valleys, immerse yourself in a weekend workshop,
sample local gourmet food - come and play in May.

In the tradition of (f)route tours of previous years,
artists from Tambo Crossing to Swifts Creek and Cassilis
are opening their studios to the public and offering a
range of specialty workshops.

For the **Open Studios** weekend (7th and 8th May), take
your map and picnic basket and wind your way through
country lanes, visiting artists in their studios. Come up early
to celebrate the opening of **Weede** at the Great Alpine
Gallery on Friday 6th May at 6pm.

To treat yourself to a creative weekend, book into one of
the **Weekend Workshops** on 28th - 29th May, and join
the artists for a night of fabulous food among the wine
barrels at the **Ensay Winery** on **Saturday 28th May** for
the **Art Lovers' Feast**.

Presented by the Great Alpine Gallery

For more information and bookings:
www.creativegippsland.com.au



great alpine

OPEN STUDIOS
+ WORKSHOPS



a series of
artist-run open
studio sessions
throughout the
Great Alpine region,
and a weekend
full of creative
workshops run by
Great Alpine artists.

Open Studios
7-8 May

Weekend
Workshops
28-29 May

COME AND PLAY, ALL OF MAY 2016

Come celebrate the Arts of Gippsland with us.
Meet the creators, join in on workshops and
master classes, talk to the artists and buy local art!
See www.creativegippsland.com.au for more detail.